



Chapter 5: QuickAlerts

The QuickAlerts feature presents a fast and easy-to-use means for relaying specific alarm information from a T:LAN/RIO to the Remote Commander Client user. This feature eliminates the need to either log into remotely deployed units or into a central network monitoring system (NMS) in order to consult multiple event logs.

Data Collection

The Remote Commander Client alarm polling mechanism is used to collect any updates to the Optima QuickAlerts. If polling fails (e.g. an unresponsive unit, or the network connection to the affected T:LAN/RIO is interrupted) the QuickAlert icons are 'grayed out' to indicate the staleness of the data set.

The Device List Display

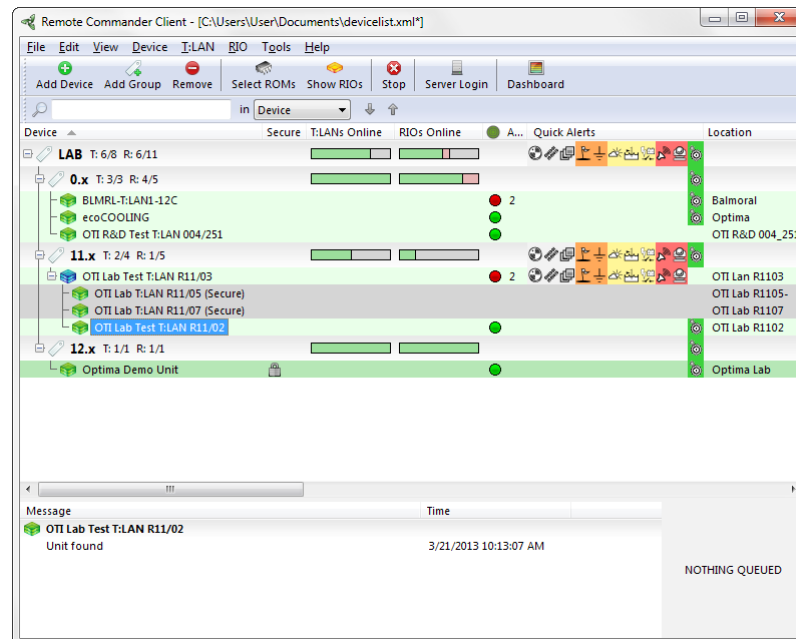


Figure 5.1

Remote Commander will update the QuickAlerts display on the Device List after each polling cycle or a manually initiated Rescan command. If a previously active QuickAlert returns to normal, the corresponding entry in the QuickAlerts column will be shown with a green background for one polling cycle, after which the entry is removed from display.

Group nodes summarize QuickAlerts of their member devices. Each icon represents a QuickAlert record of the T:LAN unit with the highest severity level within the group.



By placing the mouse pointer over a QuickAlerts icon, users can obtain detailed information about the alert. For example:

OTI Lab T:LAN R11/05 (Secure) < QA Record # 3 >

Label: QA_Record_33

Time: 2012-01-27 15:39:28

Category: Temperature

Severity: MAJ1

Value: MAJ1_OPEN

Figure 5.2

The Log Window

The QuickAlerts Log is accessible from the View Menu. It is divided into three sections. The left side of the window contains a tabbed control to filter log entries by category, severity level and device. The right side of the window contains the details of the logged entries. A toolbar at the top holds controls to apply a date range and IP address filter, as well as buttons to hide Details, Export the current view to a CSV file and Delete entries past a certain cut-off date.

Date/Time	Device	IP Address	ID	Type	Category	Severity
2015-01-29 16:11:45	ecoSENTRY - AC Monitoring	10.0.8.253	1	Normal	Security/Perimeter	WARN
2015-01-29 16:10:11	ecoSENTRY - AC Monitoring	10.0.8.253	1	Alarm	Security/Perimeter	WARN
2015-01-29 16:09:14	ecoSENTRY - AC Monitoring	10.0.8.253	1	Normal	Security/Perimeter	WARN
2015-01-29 16:08:34	ecoSENTRY - AC Monitoring	10.0.8.253	1	Alarm	Security/Perimeter	WARN
2015-01-29 16:06:20	ecoSENTRY - AC Monitoring	10.0.8.253	1	Normal	Security/Perimeter	WARN
2015-01-22 15:23:22	ecoSENTRY - AC Monitoring	10.0.8.253	1	Alarm	Security/Perimeter	WARN
2015-01-21 16:44:37	ecoSENTRY - AC Monitoring	10.0.8.253	1	Normal	Security/Perimeter	WARN
2015-01-21 16:29:30	ecoSENTRY - AC Monitoring	10.0.8.253	1	Alarm	Security/Perimeter	WARN
2015-01-05 11:45:39	ecoSENTRY - AC Monitoring	10.0.8.253	1	Alarm	Security/Perimeter	WARN
2014-11-12 16:47:35	ecoSENTRY - AC Monitoring	10.0.8.253	1	Alarm	Security/Perimeter	WARN
2014-11-04 15:25:18	ecoSENTRY - AC Monitoring	10.0.8.253	1	Alarm	Security/Perimeter	WARN
2014-09-16 17:38:09	ecoSENTRY - AC Monitoring	10.0.8.253	1	Alarm	Security/Perimeter	WARN
2014-06-27 16:52:05	ecoSENTRY - AC Monitoring	10.0.8.253	2	Alarm	Contact Inputs	MINI
2013-03-20 15:30:55	OTI Lab Test T:LAN R11,03	10.0.11.3	10	Alarm	Camera/Surveillance	CRIS
2013-03-20 15:30:55	OTI Lab Test T:LAN R11,03	10.0.11.3	9	Alarm	Horn/Buzzer/Audible Alert	CRIS
2013-03-20 15:30:55	OTI Lab Test T:LAN R11,03	10.0.11.3	8	Alarm	Low Voltage Disconnect	MINS
2013-03-20 15:30:55	OTI Lab Test T:LAN R11,03	10.0.11.3	7	Alarm	Flood Detector/Control	MINS
2013-03-20 15:30:55	OTI Lab Test T:LAN R11,03	10.0.11.3	6	Alarm	Weather Station	MINS
2013-03-20 15:30:55	OTI Lab Test T:LAN R11,03	10.0.11.3	5	Alarm	Ground Loop	MAJ5
2013-03-20 15:30:55	OTI Lab Test T:LAN R11,03	10.0.11.3	4	Alarm	Site	MAJ5
2013-03-20 15:30:55	OTI Lab Test T:LAN R11,03	10.0.11.3	3	Alarm	TBOS	WARN
2013-03-20 15:30:55	OTI Lab Test T:LAN R11,03	10.0.11.3	2	Alarm	Serial	WARN
2013-03-20 15:30:55	OTI Lab Test T:LAN R11,03	10.0.11.3	1	Alarm	Smoke Detector	WARN
2013-03-19 10:39:25	ecoCOOLING	10.0.0.247		Alarm	Connectivity	INFO
2012-02-06 14:04:23	T:LAN_014924	10.0.11.4	10	Alarm	AC Power	MINI
2012-02-06 14:04:19	T:LAN_014924	10.0.11.4	9	Alarm	Genset	WARN
2012-02-06 14:04:18	T:LAN_014924	10.0.11.4	8	Alarm	Fuel	CR11
2012-02-06 14:04:16	T:LAN_014924	10.0.11.4	7	Alarm	Heating/Cooling	MAJ1
2012-02-06 14:04:15	T:LAN_014924	10.0.11.4	6	Alarm	Access/Door	MINI
2012-02-06 14:04:14	T:LAN_014924	10.0.11.4	5	Alarm	Humidity	WARN
2012-02-06 14:04:13	T:LAN_014924	10.0.11.4	4	Alarm	Fire	CR11
2012-02-06 14:04:12	T:LAN_014924	10.0.11.4	3	Alarm	Temperature	MAJ1
2012-02-06 14:04:10	T:LAN_014924	10.0.11.4	2	Alarm	Relay Output	MINI

Figure 5.3

Severity Level Colour Chart

The following table lists the background colour that is applied to the severity levels reported in the QuickAlerts Log:



Colour	Severity Level
Light Grey	Warning
Yellow	Minor 1 to 9
Orange	Major 1 to 9
Red	Critical 1 to 9

Exporting Entries to CSV

To export entries from the QuickAlerts Log:

1. Select **View** ► **QuickAlerts Log** to open the QuickAlerts Log Window.
2. Use one of the following methods to export log entries to a CSV file:
 - To export the entire QuickAlerts Log, click the **Export** button on the toolbar.
 - To only export a portion of the QuickAlerts Log, select the records to be exported, then click the **Export** button on the toolbar.

RESULT: The Export QuickAlerts Log View to dialog appears:

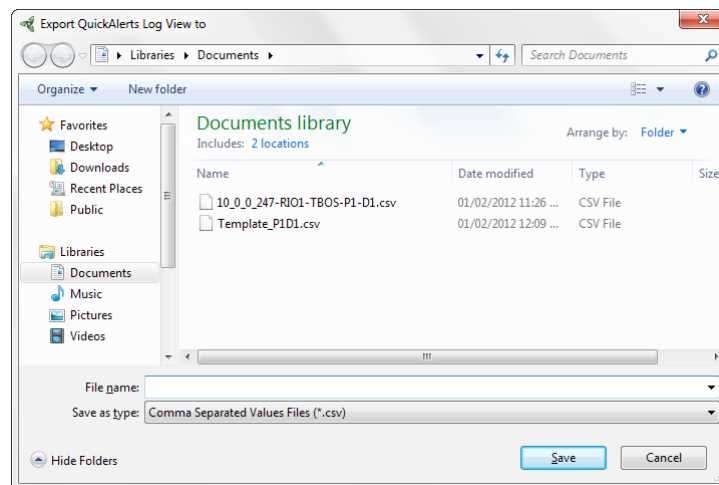


Figure 5.4

3. Enter a file name for the exported data.
4. Click **Save**.



Deleting Entries

To delete QuickAlerts Log entries past a certain cut-off date:

1. Select **View** ► **QuickAlerts Log** to open the QuickAlerts Log Window.
2. Click **Delete**.

RESULT: The Delete QuickAlerts Log Entries dialog appears:

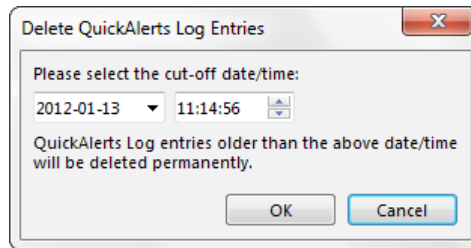


Figure 5.5

3. Adjust the cut-off date and time as needed.
4. Click **OK**.

RESULT: QuickAlerts Log entries older than the specified date and time are permanently deleted from the QuickAlerts Log.